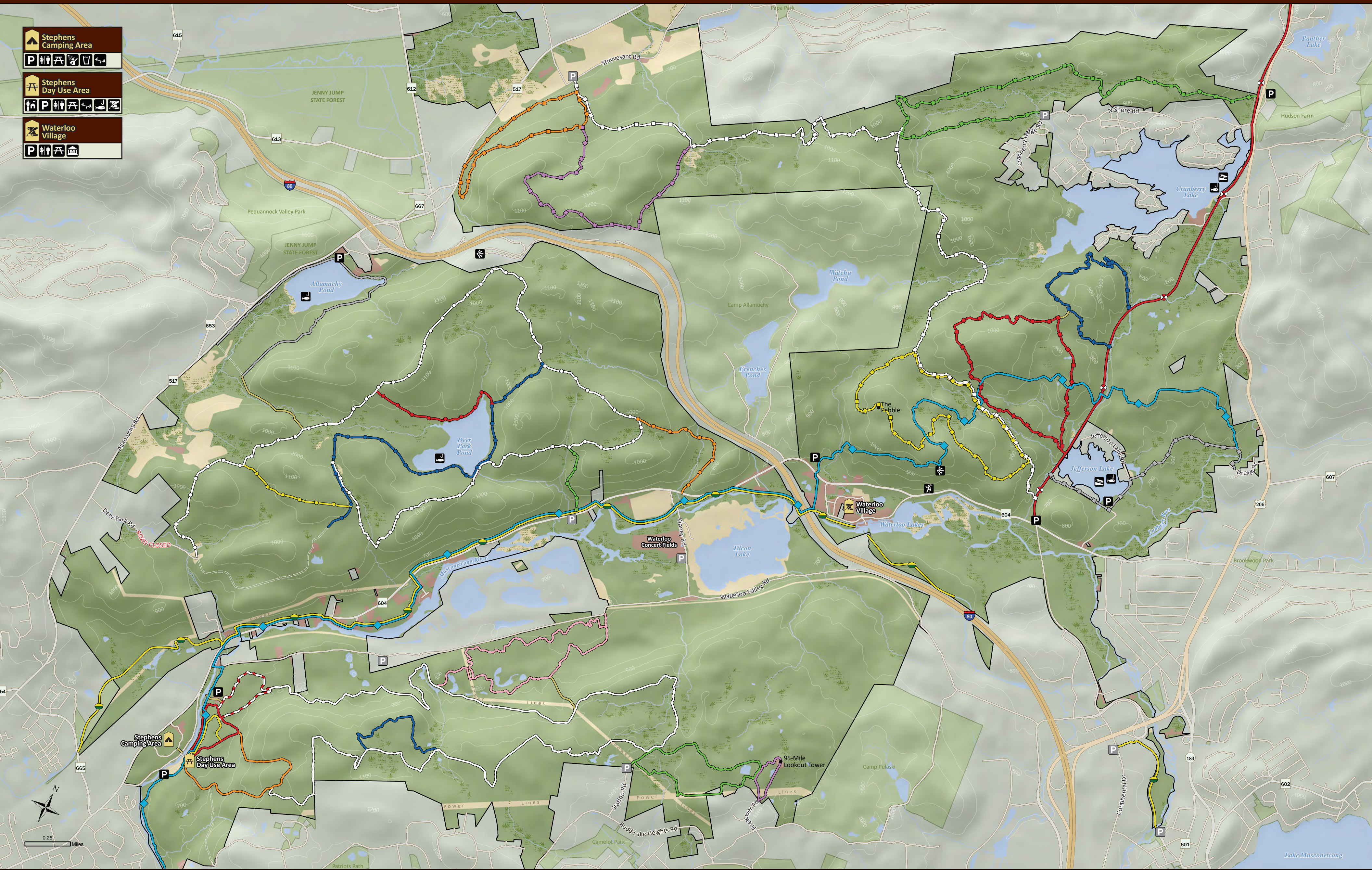


# ALLAMUCHY MTN & STEPHENS State Parks

**Stephens Camping Area**  
 P [Icons: Tent, Campfire, Picnic Table, Restroom, Shower, Drinking Water, Boat Launch]

**Stephens Day Use Area**  
 [Icons: Picnic Table, Restroom, Shower, Drinking Water, Boat Launch, Fishing]

**Waterloo Village**  
 P [Icons: Tent, Campfire, Picnic Table, Restroom, Shower, Drinking Water, Boat Launch]



Open Field or Grass	<b>Deer Park Trails</b>	Lake View Trail (2.3 mi)	<b>Stephens State Park Trails</b>	Fire Tower Trail (0.6 mi)	<b>Allamuchy North Trails</b>	Ranger Trail (2.6 mi)	<b>Regional Trails</b>	Trail Connector	Boat Launch	Parking Lot	Restrooms
Forest	Allamuchy Pond Trail (2.2 mi)	Waterloo North Trail (0.8 mi)	Blue Trail (0.8 mi)	Red Trail (0.9 mi)	Byram Trail (1.5 mi)	Switchback Trail (2 mi)	Highlands Trail (10 mi)	Unimproved Road	Drinking Water	Parking (Pull Off)	Rock Climbing
Developed Area	Barberry Trail (0.8 mi)	Waterloo South Trail (0.5 mi)	Green Trail (2 mi)	Red/White Trail (0.9 mi)	Ditch/Cardiac Trail (2 mi)	Waterloo/517 Trail (5.6 mi)	Sussex Branch Trail (3 mi)	Fishing	Park Office	Picnic Area	Scenic View
Water	Birch Trail (0.7 mi)	White Trail (6.8 mi)	Orange Trail (1.3 mi)	Yellow Trail (0.5 mi)	Iron Mine Trail (1.6 mi)	Waving Willie Trail (3.4 mi)	Towpath Trail/ Morris Canal Greenway (7.3 mi)	Historic Site	Shower	Playground	Museum
Wetland	Deer Path Trail (6.5 mi)	Maze Trail (1.9 mi)	Maze Trail (1.9 mi)	Maze Trail (1.9 mi)	Pebble Trail (3 mi)						