

Attachment A
HAER Images of the ATP Site



Photo 1 – 1973 HAER aerial photograph of ATP site looking north



Photo 2 – 1973 HAER aerial photograph of portion of ATP site



Photo 3 – 1973 HAER aerial photograph of ATP site looking south



Photo 4 – 1973 HAER aerial photograph depicting the lower raceway



Photo 5 – 1973 HAER photograph of the lower raceway at the ATP site



Photo 6 – 1973 HAER aerial photograph ATP site and the lower raceway looking northwest



Photo 7 – 1973 HAER aerial photograph of ATP site looking southwest



Photo 8 – 2007 aerial photograph of ATP site

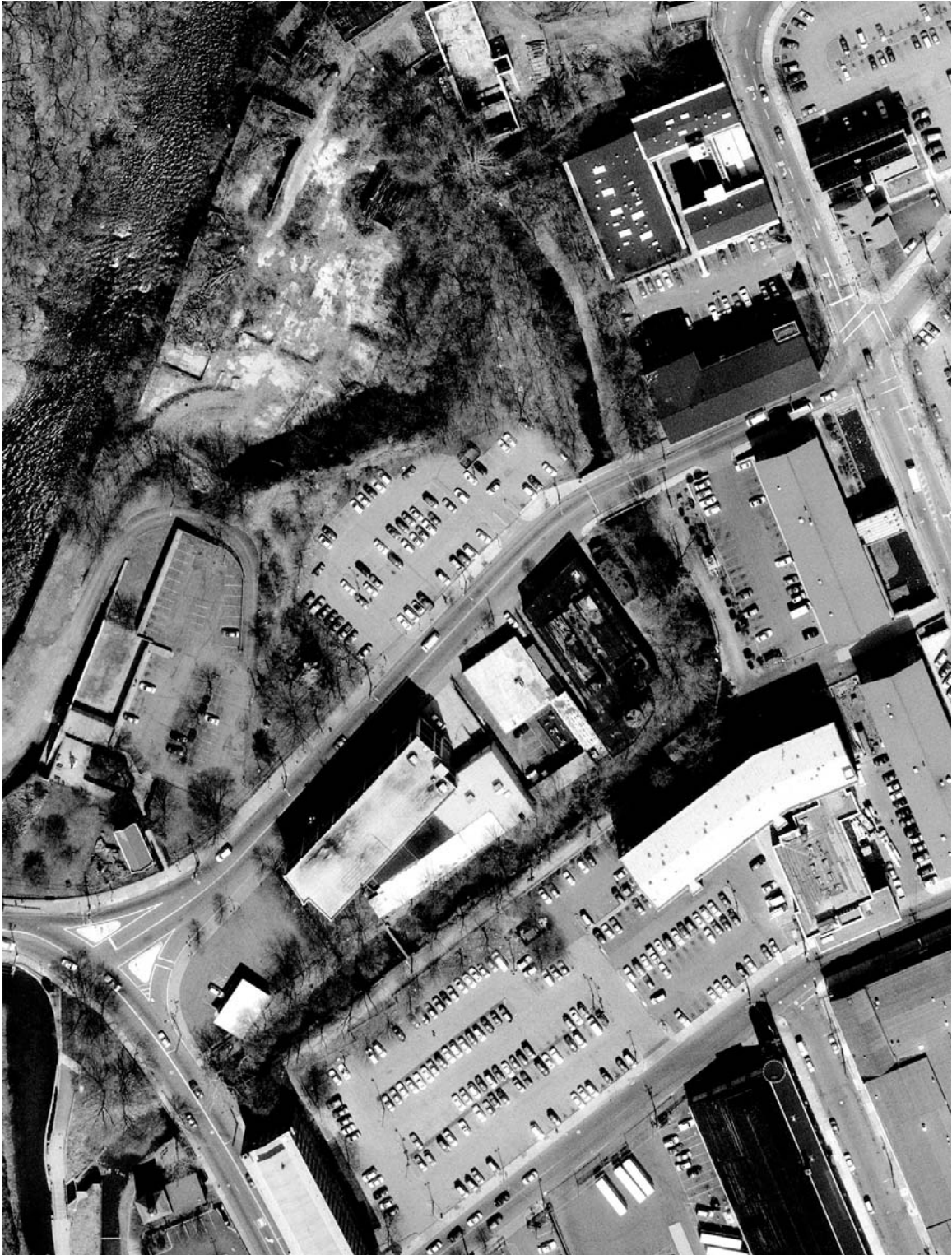
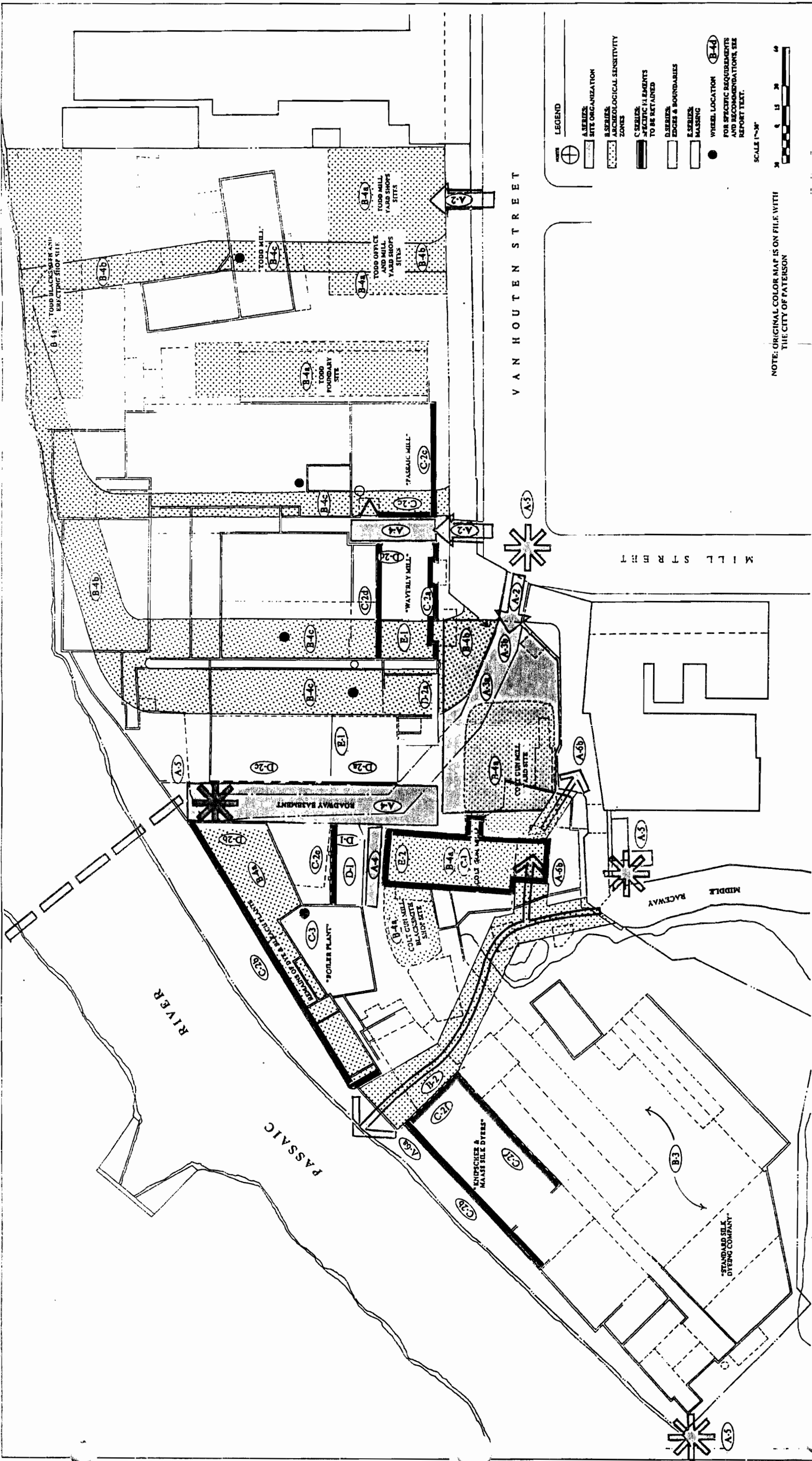


Photo 9 – 2007 aerial photograph of the quarry at the ATP site



Susan Maxman Architects
 113 South 23rd Street
 Philadelphia, Pennsylvania 19103
 215.977.8662

Associate Architect:
 Notter Architects PC
 1150 Connecticut Avenue, NW
 Suite 400
 Washington, DC 20036
 (202) 296-2700

Structural Engineers:
 Schoor DePalma, Inc
 Justin Corporate Center
 P.O. Box 900
 Manalapan, New Jersey 07726
 (908) 577-9000

Landscape Architects:
 EDAW, Inc
 Prince Street
 Alexandria, Virginia 22314
 (703) 836-1414

Historians:
 Robinson & Associates
 1710 Connecticut Avenue, NW
 Washington, DC 20009
 (202) 234-2333

Archologists:
 Historic Conservation & Interpretation, Inc
 R.D. # Box 120
 Newton, New Jersey 07860
 (201) 383-6355

HISTORICAL INDUSTRIAL SITE ANALYSIS
ALLIED TEXTILE PRINTING SITE
 Paterson, New Jersey
NATIONAL PARK SERVICE
 U.S. Custom House, Philadelphia, Pennsylvania 19106

Drawing Title
 REQUIREMENTS AND RECOMMENDATIONS
 Date MARCH 1994