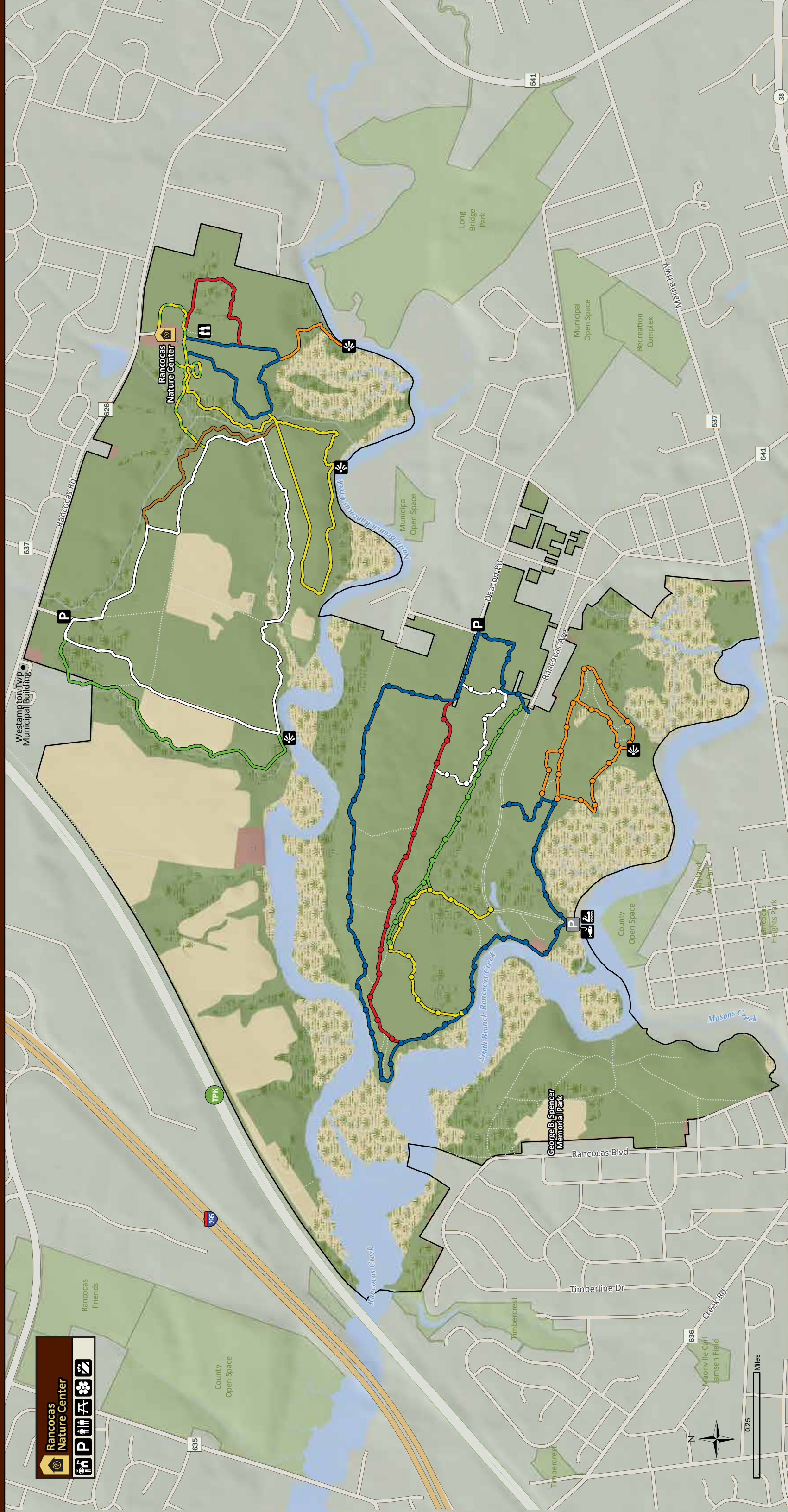


RANCOCCAS State Park



Rancocas Nature Center

- Restrooms
- Parking
- Park Office
- Picnic Area
- Interpretive Center
- Garden
- Shop
- Wildlife Viewing

- Open Field or Grass
- Forest
- Developed Area
- Water
- Wetland
- Deer Run Trail (0.7 mi)
- Little Brook Trail (0.8 mi)
- Maple Leaf Trail (0.65 mi)
- Meadow View Trail (0.4 mi)
- Rancocas Trail (2.2 mi)
- Squirrel Run Trail (0.5 mi)
- Turkey Feather Trail (0.25 mi)
- Whispering Woods Trail (1.5 mi)
- Creekside Trail (3 mi)
- Great Horned Owl Trail (0.65 mi)
- Mossy Bluff Trail (0.75 mi)
- Oak Ridge Trail (1 mi)
- Red Fox Trail (1.2 mi)
- Virginia Pine Trail (0.5 mi)
- Canoeing
- Fishing
- Garden
- Interpretive Center
- Parking Lot
- Parking (Pull Off)
- Park Office
- Picnic Area
- Restrooms
- Scenic View
- Shop
- Wildlife Viewing

0.25 Miles



Mossy Bluff Trail

Green • 0.75 miles • Multi-use
Easy • Trail along small ridge

Trailhead Creekside Trail north of parking area and sign kiosk at Rancocas Avenue. **Mossy Bluff Trail** heads west and follows sandy single-track along the edge of a short bluff. The landscape is generally flat with small dips and drops. Mossy Bluff Trail merges with Oak Ridge Trail and Great Horned Owl Trail at its western end.

Oak Ridge Trail

Red • 1 mile • Multi-use
Easy • Trail through middle of park

Trailhead Creekside Trail, 0.2 miles from parking area. **Oak Ridge Trail** heads west along a sandy woods road through forested terrain between the north and south branches of Rancocas Creek. Toward its western end, Oak Ridge Trail begins to turn south and joins Creekside Trail along the South Branch Rancocas Creek.

Red Fox Trail

Orange • 1.2 miles • Multi-use
Easy • Interconnected loops

Trailhead Creekside Trail south of gravel access road. **Red Fox Trail** is a series of loops in the flat forested terrain along the South Branch Rancocas Creek. These interconnected loops are a mix of single-track and woods roads through oak-pine forest.

Virginia Pine Trail

White • 0.5 miles • Multi-use
Easy • Semi-loop near trailhead

Trailhead South of Creekside Trail approximately 0.15 miles from parking area on Deacon Road. **Virginia Pine Trail** makes a half-loop through thick pine forest. The trail heads south on a wide sand path through a dense stand of oak and pine trees. The trail turns west and joins with Creekside Trail for a short length as the pine forest transitions into open hardwood. The trail makes a sharp turn to the north and ends as it joins Oak Ridge Trail.



TRAIL SENSE AND SAFETY

Trail Markings: Official trails are marked by colored blazes on posts and trees. For your safety and habitat protection, please stay on the trails and do not alter trail markings or create new trails.

Preparations: Consider bringing water, snacks, sunscreen, insect repellent, and a hat. Dress for the weather. Tell someone where you plan to go and when you expect to return.

Hunting: Sections are open to hunting. Bright orange clothing is recommended during hunting season.

Pets: Pets must always be on a leash no longer than six feet in length and under the control of the owner at all times. Please clean up after your pets.

Keep It Clean and Green: Bring a bag or two and carry your trash out with you. Trash cans are not provided. Don't forget to recycle!

Bikers: Follow the IMBA "Rules of the Trail" guidelines for trail etiquette and yield appropriately. Helmets are required by law for children under 17 and recommended for all riders.

Tick Protection: Bring insect repellent, wear light-colored clothing, tuck pants into socks, stay on trails, check yourself thoroughly, shower, and launder clothes immediately.

Bear Aware: Black bears are found throughout New Jersey. Do not approach or attract bears by making food available. Feeding bears is dangerous and illegal. Never run from a bear! To report an aggressive bear, call 1-877-WARN-DEP (1-877-927-6337) immediately. Please report any damage or nuisance behavior to the park office. Visit the New Jersey Division of Fish and Wildlife at www.njfishandwildlife.com for additional information on bear safety.

Emergency Numbers

1-877-WARN-DEP (1-877-927-6337) or 911



RANCOCAS STATE PARK
794 Rancocas Road
Westampton, NJ 08060
609-726-1191

Rancocas State Park is overseen by
Brendan T Byrne State Forest and
administered by Burlington County Park System
Historic Smithville Park
803 Smithville Rd., Eastampton, NJ 08060
609-265-5858

NJPARKSANDFORESTS.ORG

[FACEBOOK.COM/NEWJERSEYSTATEPARKS](https://www.facebook.com/newjerseystateparks)

[@NEWJERSEYSTATEPARKS](https://www.instagram.com/newjerseystateparks)



CMY 4/21



State of New Jersey
Department of Environmental Protection
Division of Parks and Forestry
State Park Service



TRAILS OF RANCOCAS STATE PARK

There are 14 official trails within the park totaling more than 13 miles. The trails are clustered in two areas: within the forest and meadows near Rancocas Nature Center and in the forested uplands between the north and south branches of Rancocas Creek.

Rancocas Nature Center Trails

These trails are located near Rancocas Nature Center. See descriptions below for specific trailheads. Four trails around Rancocas Nature Center are hiking only. This area is considered a school zone with children at play. Riders and pet-walkers, please use the multi-use trails.

Deer Run Trail

Blue • 0.7 miles • Hiking
Easy • Woods trail near nature center

Trailhead Maple Leaf Trail. **Deer Run Trail** heads south through mixed meadow and marsh on 750 feet of boardwalk. After leaving the boardwalk, the landscape transitions to pine forest. This section of forest was once a white pine plantation and the uniform, straight tree rows are still evident. The trail then enters a mixed hardwood forest, continuing south to a small ridge above the floodplain of North Branch Rancocas Creek. Turkey Feather Trail begins here, while Deer Run Trail turns west and continues along the edge of the riparian area. Deer Run Trail begins to turn north and continues on a gravel footpath to return to the nature center.

Little Brook Trail

Green • 0.8 miles • Multi-use
Easy • Creek-side trail

Trailhead Rancocas Trail west of parking area. **Little Brook Trail** departs from Rancocas Trail after a short distance from the parking area and continues to the west. The trail turns south and follows along a shallow creek ravine until it arrives at the edge of a large field. At its southernmost point, Little Brook Trail reaches North Branch Rancocas Creek and turns east (left) until it intersects with Rancocas Trail again.

Maple Leaf Trail

Yellow & Green • 0.65 miles • Hiking
Easy • Short loop around nature center

Trailhead Rancocas Nature Center parking area. **Maple Leaf Trail** heads east from the nature center for a short distance before turning south and along a field edge to join with Meadow View Trail. Maple Leaf Trail continues west and passes south of the parking area. West of the nature center, Maple Leaf Trail makes a short winding loop and returns to the start.

Meadow View Trail

Red • 0.4 miles • Hiking
Easy • Trail through open meadow

Trailhead South of Rancocas Nature Center parking area. **Meadow View Trail** travels east along a grass pathway through a wildlife meadow. The southern end of the meadow supports a seasonal vernal pool used by amphibians. The trail contours clockwise and passes through a zone where meadow habitat changes to white pine forest. The trail ends when it intersects with Deer Run Trail.

Rancocas Trail

White • 2.2 miles • Multi-use

Easy • Loop trail through forest west of nature center
Trailhead Parking area south of Rancocas Road and west of Irick Road (Route 637). **Rancocas Trail** makes a large loop around the former Powhatan Indian Reservation. Bounded by small streams on the east and west and North Branch Rancocas Creek to the south, Rancocas Trail travels through a mix of upland forest and meadows on woods roads and single-track trail.

Squirrel Run Trail

Brown • 0.5 miles • Multi-use
Easy • Forested creek-side trail

Trailhead Whispering Woods Trail. **Squirrel Run Trail** heads north and west as it follows a small stream bed. The single-track footpath crosses many small rises and ends when it joins with Rancocas Trail.

Turkey Feather Trail

Orange • 0.25 miles • Hiking
Easy • Trail to Rancocas Creek

Trailhead Southeast corner of Deer Run Trail. **Turkey Feather Trail** descends a short, gentle slope into the

riparian area. The trail travels southeast along the edge of the marsh. Look for waterfowl and listen for the chorus of frogs during wet months. Turkey Feather Trail meets with North Branch Rancocas Creek, then turns west and heads downstream to a scenic view.

Whispering Woods Trail

Yellow • 1.5 miles • Multi-use
Easy • Trail through forested uplands along creek
Trailhead Deer Run Trail. **Whispering Woods Trail** follows a strip of elevated land between North Branch Rancocas Creek and a smaller tributary stream to the north. At its westernmost point, Whispering Woods Trail turns east and travels along the creek and surrounding wetlands to complete its loop and return to the nature center.

Rancocas Creek Trails

These trails are located between the North Branch and South Branch of Rancocas Creek.

Creekside Trail

Blue • 3 miles • Multi-use
Easy • Follows both branches of Rancocas Creek
Trailhead Parking area on Deacon Road. **Creekside Trail** is a loop trail along the north and south branches of Rancocas Creek. The trail is on sandy woodland roads and single-track through hardwood forest and open marsh. Creekside Trail turns north and re-enters the forest, joining Virginia Pine Trail for a short distance before returning to the trailhead.

Great Horned Owl Trail

Yellow • 0.65 miles • Multi-use
Easy • Short trail through marsh area
Trailhead North side of gravel access road. **Great Horned Owl Trail** follows a sand and gravel path to the north. The trail turns west, running parallel to Mossy Bluff Trail before turning south and winding through forest to join Creekside Trail along South Branch Rancocas Creek.

This brochure was funded by Federal Highway Administration's Recreational Trails Program through the New Jersey Department of Environmental Protection.

Explore Trail Tracker
The Interactive Trails
Map of NJ State Parks



spstrailtracker.nj.gov